

**NEW**

# Accessories

## Programming Adapter IMC for Motion Control Systems V3.0 Mini USB interface

**Part No.: 6501.00392**

**6501.00392**

Temperature range: – Operating temperature	– 40 ... + 85	°C
Dimension and mass: – Dimension (L x B x H) – Mass	60 x 50 x 18 30	mm g

**Note:** All switches of S1 are in the "OFF" position in the as-delivered condition. These switches must be set accordingly depending on the application. Delivery condition of switch S2 is position U<sub>P</sub> (IMC Standard).

### General information

The programming adapter is used to connect Brushless DC-Servomotors with integrated Motion Controller and a USB interface. The different operating modes can be selected using the 7 DIP switches. One Brushless DC-Servomotor with integrated Motion Controller can be connected to each programming adapter.

### Driver installation

The driver is included in the setup package of FAULHABER Motion Manager (from version 7.0.1), which can be downloaded from the FAULHABER internet site [www.faulhaber.com/MotionManager](http://www.faulhaber.com/MotionManager).

### Description of DIP switch (S1) settings

1: NETMODE	ON	Pull-down resistor (10 kΩ) for RS232 wiring connected. This may only be connected to a node in the RS232 network
	OFF	Deactivated
2: N.C.	OFF	
3: RS232 <sup>1)</sup>	ON	Operation with RS232 interface
	OFF	Deactivated
4: N.C.	OFF	
5: AGND	ON	AGND and GND interconnected.
	OFF	AGND and GND disconnected (with separate ground)
6: DigOut2	ON	Pull-up resistor with LED connected to U <sub>DD</sub> = +5V
	OFF	Open collector
7: DigOut1	ON	Pull-up resistor with LED connected to U <sub>DD</sub> = +5V
	OFF	Open collector

### Description of DIP switch (S2) settings

U <sub>P</sub>	IMC standard - U <sub>P</sub> connection at X1 Pin 11
AnIn2	IMC with Option 7431 - AnIn2 connection at X1 Pin 9

### Description of DIP switch (S3) settings

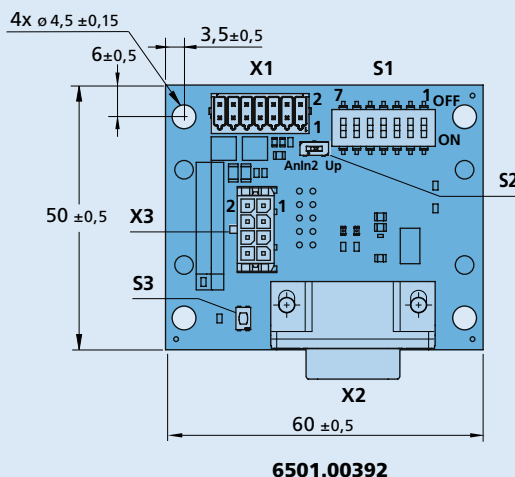
Push	DigIn2 connected to U <sub>DD</sub> = +5V
------	---

<sup>1)</sup> The pin assignments of X2 depend on the position of switches 3 and 4 of DIP switch S1.

### Pin assignment

Pin	Connection X1	Connection X2
1	U <sub>DD</sub> (+5V, max. 100mA out)	USB Mini B
2	GND	
3	n.c.	<b>Pin Connection X3</b>
4	n.c.	1 U <sub>P</sub> (AnIn2 Option 7431)
5	DigIn1 / DigOut2 / AnIn1	2 U <sub>MOT</sub> (U <sub>B</sub> Option 7431)
6	DigIn2 / AGND	3 GND
7	DigIn3 / DigOut1	4 DigIn1 / DigOut2 / AnIn1
8	n.c.	5 DigIn2 / AGND
9	AnIn2 (Option 7431)	6 DigIn3 DigOut1
10	n.c.	7 Rx/D
11	U <sub>P</sub>	8 Tx/D
12	GND	
13	U <sub>MOT</sub> (U <sub>B</sub> Option 7431)	<b>Option 7431</b>
14	GND	Common supply voltage for motor and electronics

### Dimensional drawing and connection information



Scale reduced

### Connection

No.	Function
X1	Supply and I/O connector
X2	USB
X3	Motor connector

No.	Switch
S1	DIP-switch (7 switches)
S2	DIP-switch 1 toggle switch
S3	DIP-switch 1 push button